

MONTHLY MEMBERSHIP PROGRESS REPORT

District 201N1

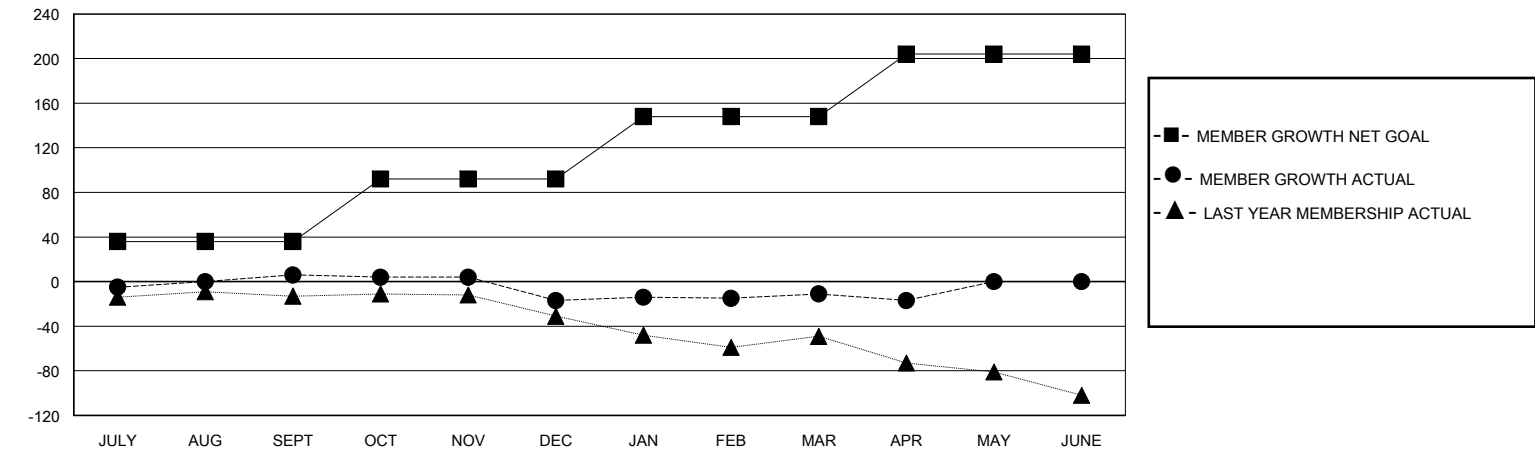
Results as of: 4/30/2025

GMT:				LOCATION AUSTRALIA				GMT CA			
Clubs				Members							
RESULTS FOR 2024-2025				RESULTS FOR 2024-2025							
QUARTER	NEW CLUB GOAL	NEW CLUBS	DROPPED CLUBS	QUARTER	MEMBER GROWTH NET GOAL	MEMBER GROWTH ACTUAL	DROPPED MEMBERS ACTUAL (including transfers)				
JULY/AUG/SEPT	0	0	1	JULY/AUG/SEPT	36	37	25				
OCT/NOV/DEC	0	0	0	OCT/NOV/DEC	56	35	49				
JAN/FEB/MAR	0	0	0	JAN/FEB/MAR	56	38	29				
APR/MAY/JUNE	1	0	0	APR/MAY/JUNE	56	10	13				

GOALS AND ACTUAL NEW CLUBS CUMULATIVE



GOALS AND ACTUAL MEMBERS CUMULATIVE



DROPPED CLUBS: 1		31 CLUBS OF 62 ADDED 1 OR MORE NEW MEMBERS	<u>GENDER DISTRIBUTION</u>	
			MALE	777 (64.53%)
			FEMALE	427 (35.47%)
<u>DROPPED MEMBERS</u>		CLICK HERE FOR CUMULATIVE MEMBERSHIP DATA		
DECEASED	9		TOTAL FAMILY UNIT MEMBERS 0	
CLUB CANCELLED	0			
OTHER	107		FAMILY MEMBERS PAYING HALF DUES 0	
TOTAL	116			